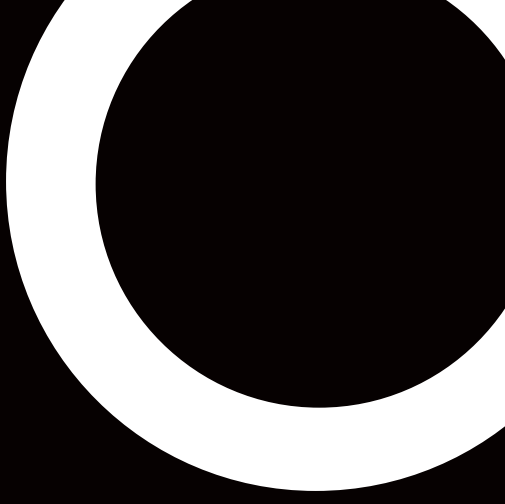


LUMENTURE





“Luminaire is consistently fantastic to work with. The team is knowledgeable, responsive, & solution oriented”

This combined with high quality, competitively priced light fixtures with well-communicated, typically short lead times makes them a top go-to manufacturer for downlights, track heads, wall washers, and their KBeam™ track.

Sales Representative Partner



WE LEAD THROUGH INNOVATION

From our industry-first track adapter with infinite rotation for effortless aiming to our K-Beam™ suspended track system – we invent superior solutions to lighting challenges.



WE TRY TO BE ENVIRONMENTALLY CONSCIOUS

We aim to reduce our carbon footprint through energy-efficient models, discreet form factors and innovative packaging.



WE PRIDE OURSELVES IN OUR SERVICE

We strive to be the easiest lighting manufacturer to do business with. Most of our products are in stock, ship on time and are within your budget.



WE FOLLOW A DISCIPLINED DESIGN PROCESS

“Our process ensures that our products are both beautiful and functional. Sometimes “less is more.”

**Not all lighting
manufacturers
are created equal.**



T50
Ø 2"



T65
Ø 2½"



T80
Ø 3¼"

Seamlessly blending into any environment, our T-Series track cylinders reveal no visible hardware and have **a nested center arm for "cleaner" ceilings.**

Our innovative patented Infinity Adapter™ is **50% smaller** than competitive adapters and has the unique ability to rotate continuously for **effortless aiming.**



Light source
120VAC, 7.5W - 22W
Up to 2000lm at 104lm/W

CCT/CRI
22K, 27K, 30K, 35K, 40K,
Dim-to-Warm, CRI 90+, 95+

Snoots
Tapered  Cylinder 

Mounting Type
J-Type Track, G-Type Track, H-Type Track,
L-Type Track, Micro Canopy, Slim Canopy



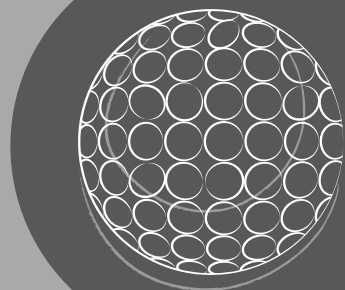
TRACK CYLINDERS

Dimming
as low
as 1%

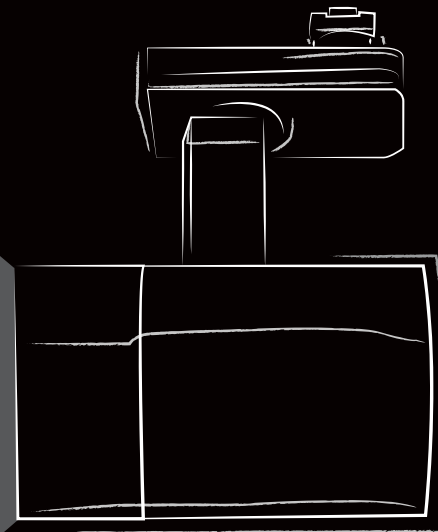
Our designs offer broad dimmer compatibility with flicker-free Triac/ELV **dimming as low as 1%** on certain dimmers.

Our threaded accessory holder ensures **zero light leakage** and allows **easy field replacement** of accessories and multiple snoot designs.

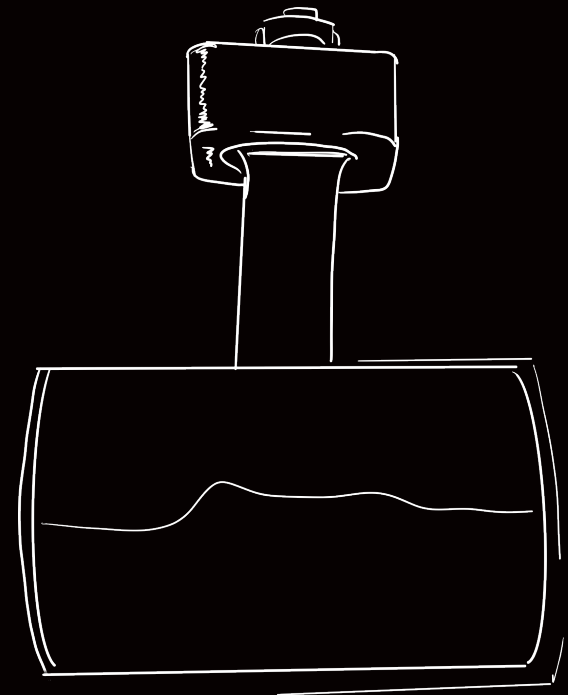
GOLF BALL
1 5/8"



**up to 75% smaller
than competitive
adapters**



T40
Ø 1 5/8"



T50
Ø 2"

Our smallest track fixture



T40
Ø 1 5/8"

The T40 is designed to blend **seamlessly** into a wide range of environments.



T40S
Ø 1 5/8"

The T40 comes standard with Lumenture's patent-pending, low-profile **Mini Adapter** that is even smaller than our industry-leading Infinity Adapter™



Available in both round and square configurations, this mini track fixture is **flexible to your space** and designs.



Light source
120VAC, 7W
Up to 600lm @ 85lm/W

CCT/CRI
22K, 27K, 30K, 35K, 40K,
Dim-to-Warm, CRI 90+, 95+

Snoots
Tapered  Cylinder 

Mounting Type
J-Type Track, L-Type Track,
Micro Canopy, Slim Canopy

Finish


Louvers


Lenses


SPOT CANOPIES

virtually
disappears

Micro
Canopy

2 3/4" trim

Slim
Canopy

4 3/4" trim

The slim canopy mounts directly over a standard junction box - resulting in an **elegant and clean** install of Lumenture's **award-winning** T-Series track fixtures.

With a minimal 2 3/4" trim, Lumenture's micro-canopy virtually **"disappears"** into the ceiling without requiring a junction box, offering an even **more refined look** for the most high-end applications.



Fixture Compatibility
T40, T50, T65, T80

Finish



TRACK WALLWASHERS

sleek,
discreet,
powerful.



A custom TIR lens enhances on-axis brightness, allowing each TWW to deliver **industry-leading efficiency** and performance. Plus, they both have the ability to tilt 180° in either direction, allowing for customization of any space.

TWW160



6 3/8"

TWW180



7 1/8"

Luminaire's Track Wall Washers are a mix of sleek, discreet and powerful, creating the **ultimate lighting powerhouse**.



Light source

120VAC, 17W / 120V AC, 35W
Up to 1600lm @ 95lm/W
Up to 4000lm @ 115lm/W

CCT/CRI

27K, 30K, 35K, 40K,
Dim-to-Warm, CRI 90+

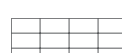
Mounting Type

J-Type Track, J-Type Stem,
H-Type Track, L-Type Track

Finish



Baffle



K-BEAM™

2-Circuit, 1-Neutral suspended track with our patented I-Beam design. Compatible with Lumenture fixtures and other J-Type track fixtures. Available in 4' or 8' length track (field-cuttable) in black or white.



TWO-CIRCUIT

2-Circuit, 1-Neutral track. Compatible with Lumenture fixtures and other J-Type track fixtures. Available in 4' and 8' lengths (field-cuttable) with black or white finishes.

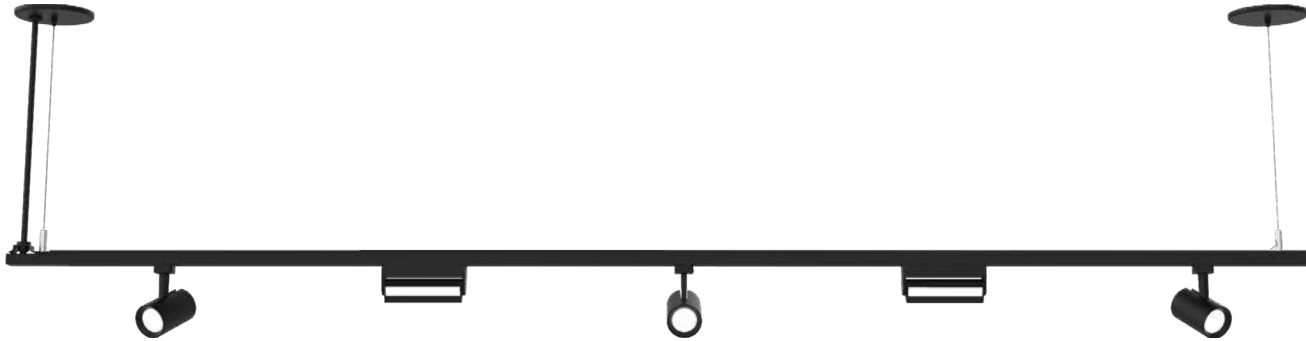
TRACK SYSTEMS

ONE-CIRCUIT

1-Circuit, 1-Neutral track. Compatible with Lumenture fixtures and other J-Type track fixtures. Available in 4' and 8' lengths (field-cuttable) with black, white or silver finishes.

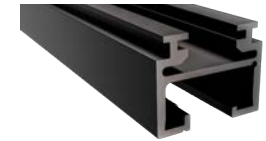


K-BEAM™ SUSPENDED TRACK SYSTEM



TRACK CONNECTORS

All connection accessories and power feeds are made of polycarbonate with galvanized steel back plates. Available in straight, 90°, T-connectors, and X-connectors.



I-BEAM CHANNEL

Our K-Beam™ has a patented I-Beam channel was designed in order to support more weight than traditional track, providing extra strength over a long span.



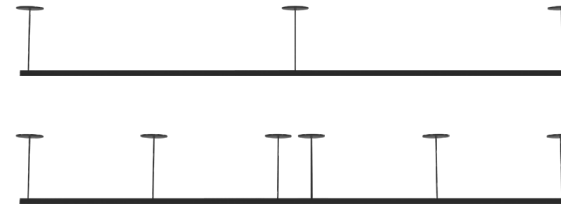
STABILIZING ROD

To further increase the system's stability and alignment, we include an optional stabilizing rod in each K-Beam™ suspension kit.



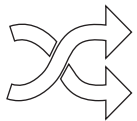
INSTALLATION SAVINGS

K-Beam™ eliminates the need for Unistrut or other expensive proprietary suspended track systems and reduces suspension points up to two-thirds, resulting in installation savings of 35% or more.



LONGER SUSPENSION

Reinforced K-Beam™ allows suspension on up to 8' centers and eliminates any sagging or tilt.



LIGHTING DESIGN FREEDOM

With its small form factor, K-Beam™ blends seamlessly into ceilings and comes standard with a two-circuit, one-neutral configuration that delivers greater lighting design flexibility.

HALLWAY LIGHTS



5 5/8"

Luminaire's patented HL110 directs light toward the walls – allowing you to increase perceived light levels and **reduce fixture counts**. The impressive performance comes in a discreet 5 5/8" form factor that **blends effortlessly into ceilings**.



Light source

120VAC, 14W
Up to 1250lm @ 91lm/W

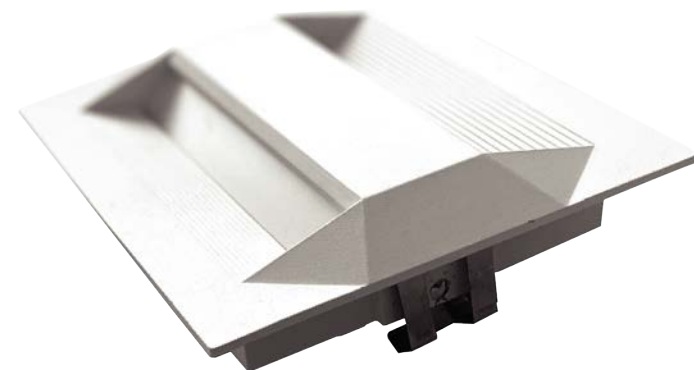
CCT/CRI

27K, 30K, 35K, 40K,
CRI 90+

Finish

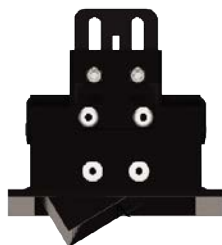


LUMENTURE
www.luminaire.com



RECESSED WALLWASHERS

RWW160



The RWW160 is a compact ($7\frac{1}{8}'' \times 2\frac{5}{8}''$) yet powerful recessed wall washer. A central pivot point allows tilting 40° in both directions for **easy adjustment** and **versatility**. The integral junction box make installation in shallow ceilings a breeze.



Light source

120VAC, 14W
Up to 1250lm @ 90lm/W

CCT/CRI

27K, 30K, 35K, 40K,
CRI 90+

Finish



Louvers





RM35



2 1/8"

1 3/8"

a clean
& quiet
ceiling

RECESSED MULTIPLES

With a discreet module **1 3/8"** aperture, knife-edge trim and excellent visual cutoff - Lumenture's RM35 redefines the recessed multiple. The diminutive recessed modules deliver a powerful **500 lumens each**, where you want it and without glare resulting in superior light quality with a "clean" and "quiet" ceiling.



Light source

120VAC, 7W per head
Up to 1800lm @ 70lm/W

CCT/CRI

27K, 30K, 35K
CRI 90+

Modules

1 Module, 2 Module, 3 Module,
4 Module, 4 Square Module

Finish



Lenses



RECESSED DOWNLIGHTS

DL35
1 3/8"

The newest addition to our recessed downlight family also happens to be **our smallest downlight** yet. The DL35 has a discreet **1 3/8" aperture**, a knife-edge trim, and excellent visual cutoff. This diminutive fixture delivers a powerful 500 lumens where you want it and without glare. The result is **superior light quality** and both a "clean" and "quiet" ceiling.

This fixture is great for high-end residential, retail, above shelving, and anywhere you need a little extra light.

Light source

120VAC, 7W
Up to 500lm @ 70lm/W

Trim Type

Round (3" trim), Round Flangeless,
Square Flangeless

CCT/CRI

27K, 30K, 35K
CRI 90+

Finish



Louvers



Lenses





DL60
2"

With a 2" aperture, knife-edge trim and excellent visual cutoff - Lumenture's DL60 blends discreetly into any environment. These recessed modules deliver high lumens without glare. The result is **superior brightness** and quality from an **unobtrusive fixture**.

The DL60 comes in **fixed** (DL60) and **adjustable** (DLA60) configurations and is available in both remodeler (with an attached junction box) or with optional rough-in housings to fit any construction need.



DL75
3"

Lumenture's DL75 downlight line has a 3" aperture, knife-edge trim and **excellent visual cutoff**. Similar to our other downlight lines, the DL75 delivers high lumens without glare and integrates discreetly into any installation.

The DL75 is available in **fixed** (DL75), **adjustable** (DLA75), and—coming soon—wall washer (DLW75) configurations. It is also available both in remodeler (with an attached junction box) or with optional rough-in housings to **fit any construction need**.



Light source

120VAC, 6.5W-17W
Up to 1600lm @ 111lm/W

CCT/CRI

22K, 27K, 30K, 35K, 40K
Dim-to-Warm, CRI 90+, 95+

Trim Type

Round, Square, Flangeless,
Wet, Pinhole

Finish



Louvers



Lenses



Light source

120V AC, 6.5W-17W
Up to 1600lm @ 111lm/W

CCT/CRI

22K, 27K, 30K, 35K, 40K
Dim-to-Warm, CRI 90+, 95+

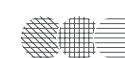
Trim Type

Round, Square, Flangeless,
Wet, Pinhole

Finish









Louvers



Lenses



		Output	Housing	Trim Type	Aperture	Trim Width	Adjustability	
     	•	DL35	7W; up to 500lm	Pan (Non-IC-Rated options) Remodel (Non-IC-Rated)	Round, Square, Round Flangeless	1"	Knife-edge	X
	•	DL60	6.5W; up to 700lm 17W; up to 1600lm	Closed (IC-Rated) Open (Non-IC & IC-Rated options) Pan (Non-IC & IC-Rated options) Remodel (Non-IC & IC-Rated options) Chicago Plenum (IC-Rated options)	Round, Square, Round Flangeless, Square Flangeless, Wet, Pinhole	2"	Knife-edge	X
	•	DLA60	6.5W; up to 700lm 17W; up to 1600lm	Closed (IC-Rated) Open (Non-IC & IC-Rated options) Pan (Non-IC & IC-Rated options) Remodel (Non-IC & IC-Rated options) Chicago Plenum (IC-Rated options)	Round, Square	2"	Knife-edge	35° tilt
	•	DL75	6.5W; up to 700lm 17W; up to 1600lm	Closed (IC-Rated) Open (Non-IC & IC-Rated options) Pan (Non-IC & IC-Rated options) Remodel (Non-IC & IC-Rated options) Chicago Plenum (IC-Rated options)	Round, Square, Round Flangeless, Square Flangeless, Wet, Pinhole	3"	Knife-edge	X
	•	DLA75	6.5W; up to 700lm 17W; up to 1600lm	Closed (IC-Rated) Open (Non-IC & IC-Rated options) Pan (Non-IC & IC-Rated options) Remodel (Non-IC & IC-Rated options) Chicago Plenum (IC-Rated options)	Round, Square, Round Flangeless, Square Flangeless	3"	Knife-edge	35° tilt
	•	DLW75 <i>COMING SOON</i>	6.5W; up to 700lm 17W; up to 1600lm	Open (Non-IC & IC-Rated options) Pan (Non-IC & IC-Rated options) Closed (IC-Rated) Remodel (Non-IC & IC-Rated options)	Round, Square, Round Flangeless, Square Flangeless	3"	Knife-edge	X



LUMENTURE

Proudly Designed & Engineered
in the State of Connecticut

www.lumenture.com

482 Pepper Street, Monroe, CT 06468 - 203.864.3333 - team@lumenture.com