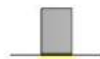
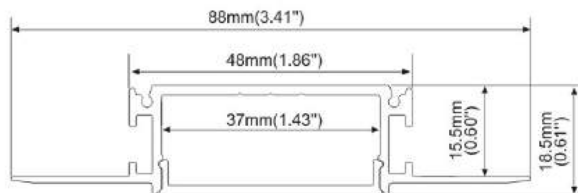
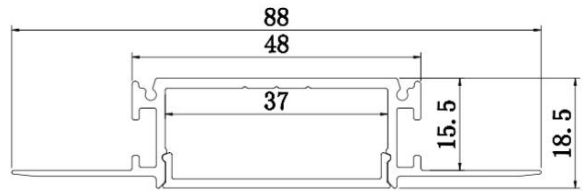
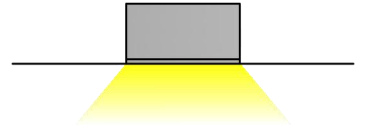
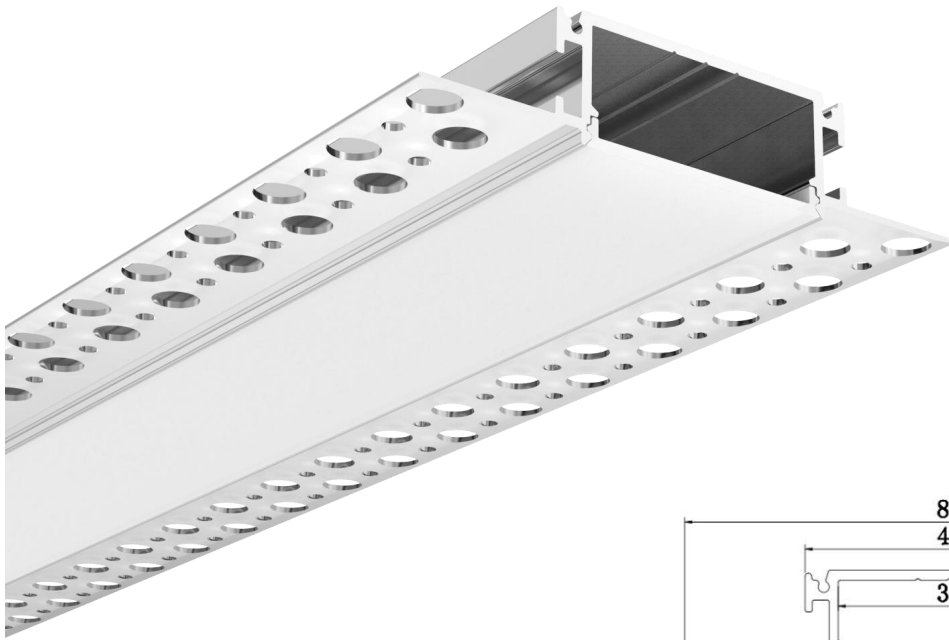


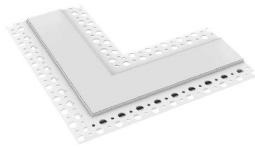
End caps



• PC diffused cover



End Caps



Connectors



Size: 88*18.5mm(W*H)

Material: AL6063-T5 Aluminum + PC

Stock Length: 2m, 2.5m, 3m, max 5m

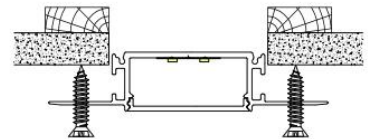
Standard Color: Silver. Other colors on request

Compatible LED Strips: 2 rows 120led/m 2835 LED Strips

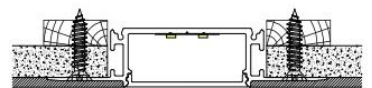
Max Power: 30W/Meter

Installation: Plaster-in

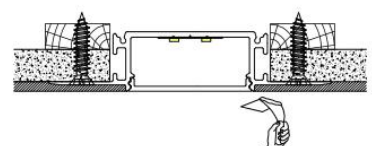
Application: ceiling, wall, ect



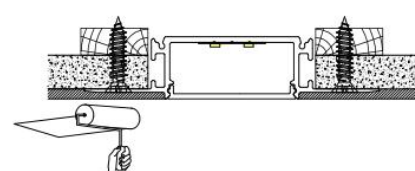
STEP1



STEP2



STEP3

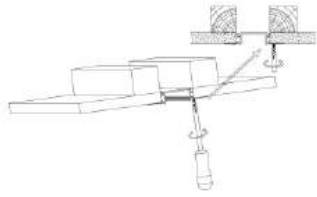


STEP4

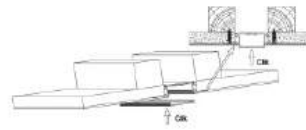


CLD-LZ081-R

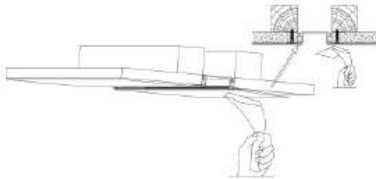
Installation methods



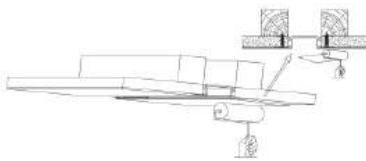
Step 01:
Fix the profile on plasterboard



Step 04:
Stick led strip



Step 02:
Painting the Plaster



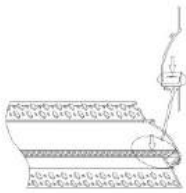
Step 03:
Paint lacquer(overcoating)



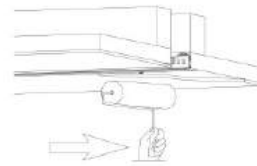
Step 05:
Install diffuser

CLD-LZ082-R

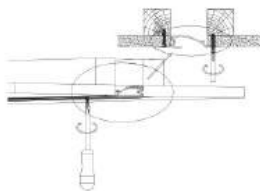
Installation methods



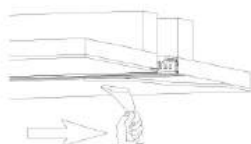
Step 01:
Stick led strip



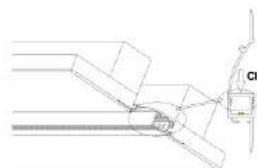
Step 04:
Paint lacquer(overcoating)



Step 02:
Fix the profile on plasterboard



Step 03:
Painting the Plaster



Step 05:
Install diffuser